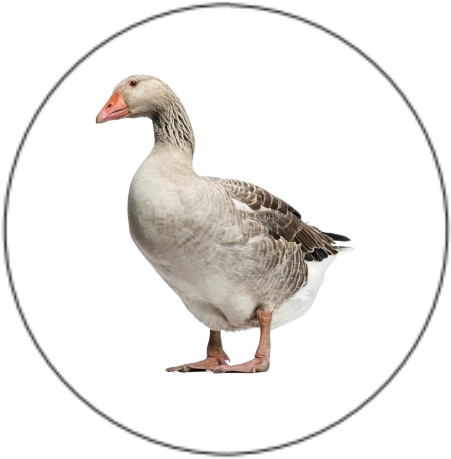


2 Légumes d'Eté dans les Animaux de la Ferme



Mouton

Chien

Artichaut

Ail

Cochon

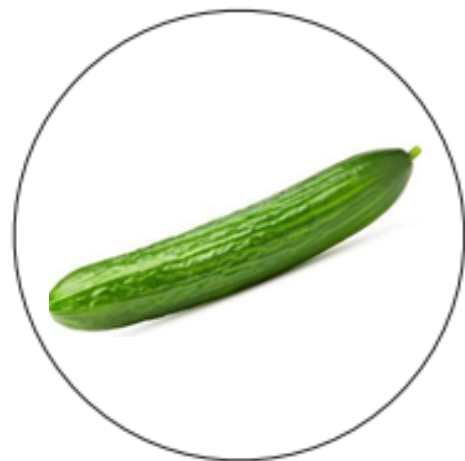
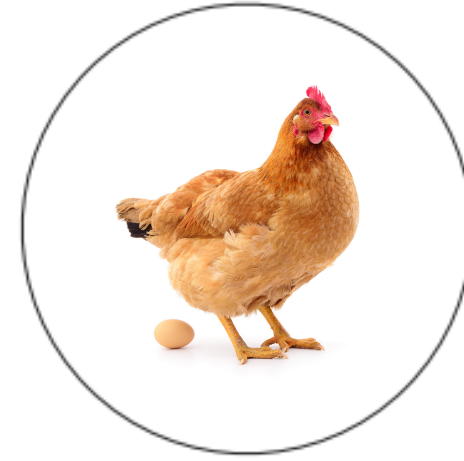
Chèvre

Coq

Lapin

Oie

2 Légumes d'Eté dans les Animaux de la Ferme



Chèvre

Coq

Poule

Vache

Lapin

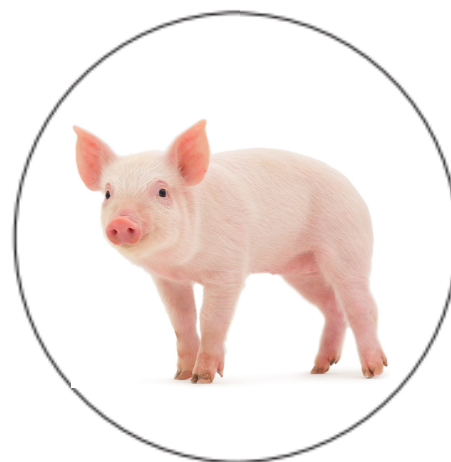
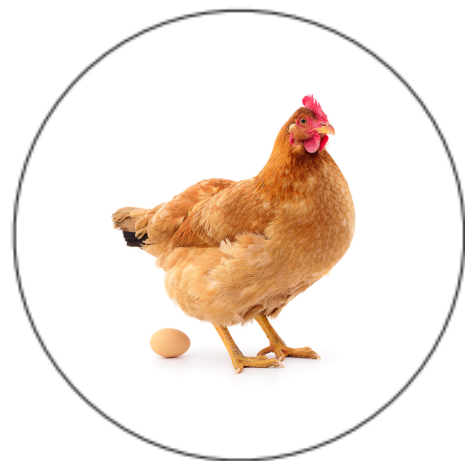
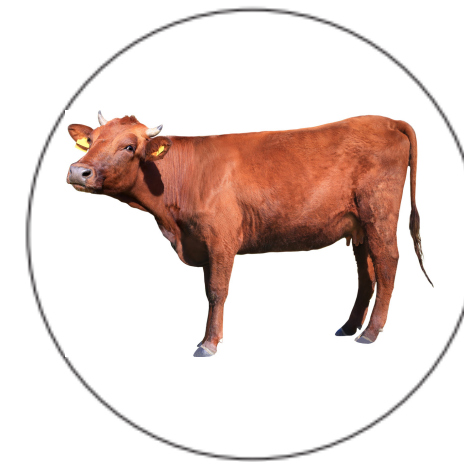
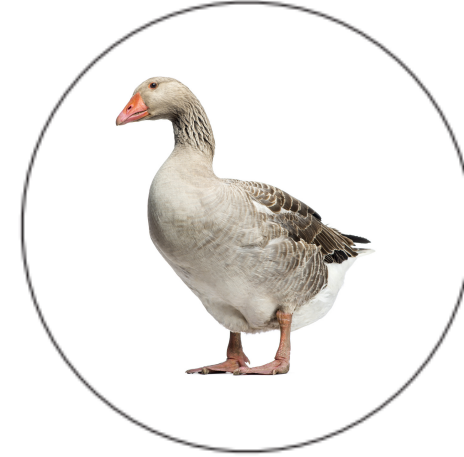
Petit-Pois

Concombre

Cochon

Chien

3 Légumes d'Eté dans les Animaux de la Ferme



Navet

Lapin

Oie

Mouton

Fève

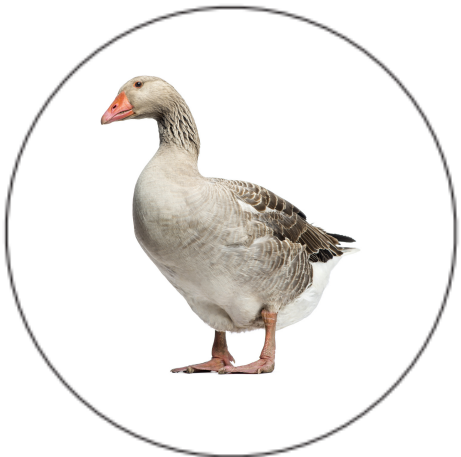
Vache

Poule

Radis

Cochon

3 Légumes d'Eté dans les Animaux de la Ferme



Poule

Asperge

Chèvre

Coq

Vache

Chou-Fleur

Chien

Oie

Ail